



MONTHLY MEMBERSHIP PROGRESS REPORT

District 21 C

Results as of: 03/31/2019

GMT: WILLIAM PHILLIPI

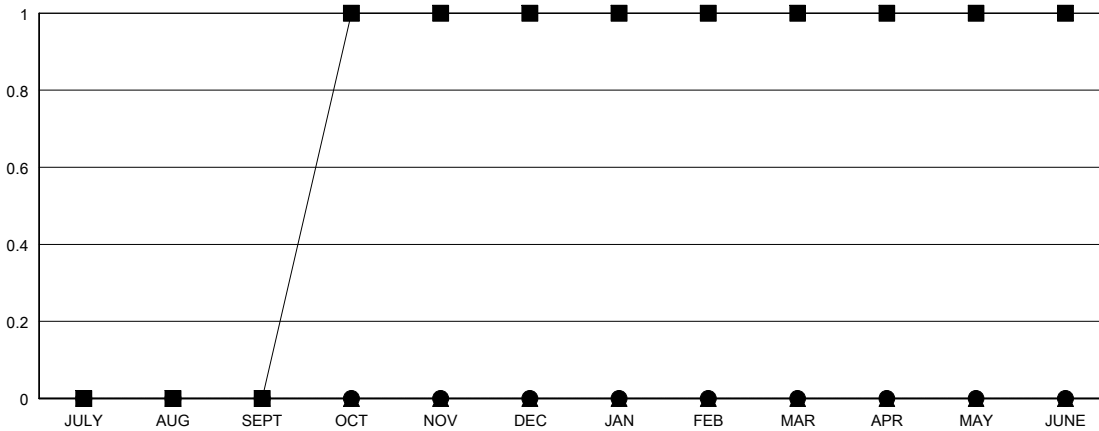
LOCATION ARIZONA

GMT CA

Clubs			
RESULTS FOR 2018-2019			
QUARTER	NEW CLUB GOAL	NEW CLUBS	DROPPED CLUBS
JULY/AUG/SEPT	0	0	0
OCT/NOV/DEC	1	0	0
JAN/FEB/MAR	0	0	0
APR/MAY/JUNE	0	0	0

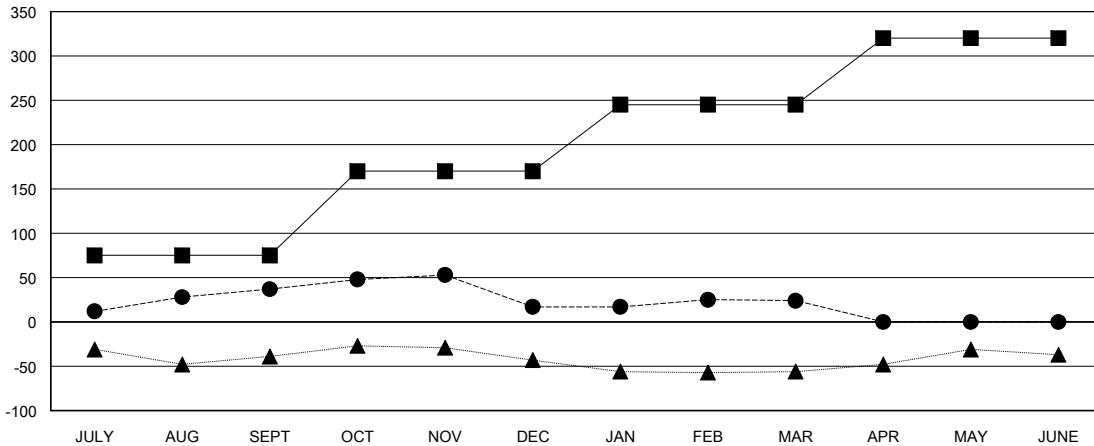
Members			
RESULTS FOR 2018-2019			
QUARTER	MEMBER GROWTH NET GOAL	MEMBER GROWTH ACTUAL	DROPPED MEMBERS ACTUAL (including transfers)
JULY/AUG/SEPT	75	66	25
OCT/NOV/DEC	95	34	51
JAN/FEB/MAR	75	25	20
APR/MAY/JUNE	75	0	0

GOALS AND ACTUAL NEW CLUBS CUMULATIVE



- - CURRENT YEAR GOALS FOR NEW CLUBS
- - CURRENT YEAR ACTUAL NEW CLUBS
- ▲ - LAST YEAR ACTUAL NEW CLUBS

GOALS AND ACTUAL MEMBERS CUMULATIVE



- - MEMBER GROWTH NET GOAL
- - MEMBER GROWTH ACTUAL
- ▲ - LAST YEAR MEMBERSHIP ACTUAL

DROPPED CLUBS: 0

23 CLUBS OF 42 ADDED 1 OR MORE NEW MEMBERS

GENDER DISTRIBUTION	
MALE	674 (57.56%)
FEMALE	497 (42.44%)
Women Percentage Fiscal Year Goal: 55%	

DROPPED MEMBERS	
DECEASED	14
CLUB CANCELLED	0
OTHER	82
TOTAL	96

[CLICK HERE FOR CUMULATIVE MEMBERSHIP DATA](#)

TOTAL FAMILY UNIT MEMBERS	389
FAMILY MEMBERS PAYING HALF DUES	212